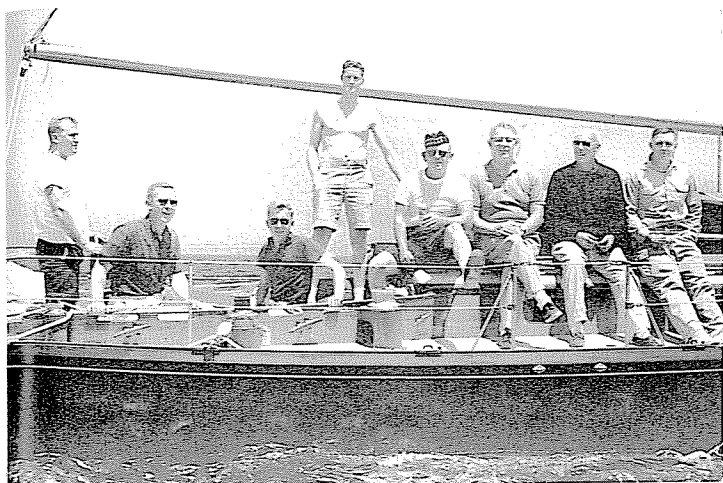


OFF-THE-LAKE RACING



Crew of *LADY LINDEN* after 1962 Bermuda Race. L to R-Howard Rekers, Jr., Jay Holahan, Henry Williams, Larry Huntington, George DeGroat, Bill Sheffield, Skipper Arthur Hughes, David Barker.



FIREFLY drying out in Ft. Lauderdale on way to 2nd in Division in 1971 SORC. Shumway/Odenbach/Goldstein Syndicate.



Crew of *MARGARET* at the 1972 Mackinac Race, John Ellison, Chuck Lee, Unident. Steve Haarstick, Bill Watson, Skipper Henry Williams, Maureen Williams, Randy Marks, Steve Humphries.

When RYC skippers venture off-the-lake to race it can hardly be described as a vacation. Vast amounts of planning, effort and expense are required to put a boat and crew together ready to sail in a remote port. Some who have tried have risked chartering while others have shipped or sailed their own boats over long distances. Even though competing against formidable national and international competition, frequently in strange waters, RYC sailors have turned in impressive results wherever they sailed, bringing much credit to the Club.

SOUTHERN OCEAN RACING CIRCUIT

The SORC, or Circuit as it is called, is a demanding series of six races that attracts many of the world's best skippers in their "gold plated" specially designed racing machines. Even though individual races vary from year-to-year, the Circuit always includes the tough 184 mile Miami-Nassau Race and the gear-busting 370 miles St. Petersburg-Ft. Lauderdale Race.

Rochester Yacht Club's participation in the SORC dates back to 1961 when Chuck Angle sailed his Rochester built *Halcyon* in the Nassau Race. However, the major Club effort in this prestigious series was the result of a syndicate consisting of John Odenbach, Sr., Frank Shumway and Alan Goldstein who went to Florida eight times to carry the RYC Burgee. Their approach to the question of "Who's in charge?" was solved by rotating the skipper assignment from race to race.

The first attempt in the Circuit was in 1965 in Alan Goldstein's Columbia 40 *Madame*. His best finish that year was 9th in class in the Nassau-Cup Race. The following year the group chartered the Nevin's 40 *Sula*. In the Lipton Cup Race they had 1st in Division and 3rd in Fleet, and a 2nd in Division in the tough Miami-Nassau Race before splitting a headstay in the next race.

Alan Goldstein took the Cal 40 *Madame* to Florida in 1967 sailing the complete Circuit for the first time, and finished a creditable 10th in a fleet of 88 boats in overall results.

In 1968 and 1969 John Odenbach took the Redline 41 *Rampage* to the Circuit. The results included a remarkable 8th in the overall final standings the first year and a victory in the St. Petersburg-Venice Race the next.

A new Derektor built 40 footer named *Madame X* was Alan Goldstein's entry in 1970. A dismasting in the Lipton Race, half-way through the series, prevented a high finish even though repairs were completed in time to sail the final two contests.

The group went the charter route again in 1971 in the Morgan 42 *Firefly* owned by Russell Firestone. Heavy weather forced 25 of 92 entries to drop out of the hard St. Pete-Ft. Lauderdale Race, but *Firefly* went on to take second in Class. For the entire Circuit she placed 2nd in Division 4.

THE OUTHOUSE REGATTA



In the early 1970's, a prominent part of the racing scene at Rochester Yacht Club was George Castle's "Outhouse Regatta." Timed to follow the LYRA Regatta, when held in the Chaumont Bay Area, it attracted many Rochester Yacht Club skippers.

This was a most unique regatta. Anyone was allowed to race and there was no handicapping. Thus cruising boats, sunfish, canoes, row boats, and anything else that floated went out to race. The starting line was a vague place somewhere in Chaumont Bay and the casual course did include, as a mark, a floating outhouse anchored somewhere in the Bay.

At the presentation ceremonies, everyone received a prize made by George's wife Nell. The winner was the boat that George felt should be the winner, whether or not it came in first.

The awards party culminated in the burning of the outhouse, which George Castle, the master of ceremonies, the judge, and the race chairman had towed back to the marina.

It was a refreshing change from the normal regatta.

John Odenbach returned to southern waters again with his C&C 43 *Rampage* in 1973 and 1975 finished 3rd and 2nd in Division, respectively.

This Odenbach/Shumway/Goldstein effort in Florida/Bahamas waters has been a great one which enhanced the racing reputation of the Club. All who crewed with the group in these races are too numerous to list, but the following handful of more active participants should be mentioned:

Shirley Shumway	Denis Doyle
Kent Hill	Jim Moran
Louise Odenbach	Betty Strassenburgh
John Odenbach Jr.	John Meteyer
Gardiner Odenbach	Bus Warden
Fritz Odenbach	Helen Ingerson
Bob Strassenburgh	Chuck Lee
John McGrath	Bob Lawless

Another Rochester attempt to SORC competition was made in 1970 and 1971 by a syndicate headed by Helen Ingerson and Bill Stolze. They sailed the chartered Bermuda 40 *Heather Honey* in the four east coast races in 1970 with a group consisting of Margaret Stolze, Joe Ingerson, Chuck and Sara Exley, Bob Stolze, Randy Beachner and Walt Decker. The following year they chartered the *Soverel 37, Apollo*, with Ted Roth, Jim Robfogel and Ted and Nancy Broderson added to the group. A cracked centerboard that dragged under the boat in the tough Miami-Nassau Race took them out of contention.

BERMUDA RACE

The Biennial Bermuda Race has attracted RYC entires on five occasions. The 600 mile race starts at Newport, Rhode Island and ends in Hamilton, Bermuda. Herb Wahl and a crew of first-time ocean racers entered his 42 foot *Lorelie* in 1950, finishing about mid-fleet. His wife, present members Joe and Helen Ingerson and former member John Remington were aboard *Lorelei*.

Arthur Hughes in his beautiful 40 foot sloop *Lady Linden* sailed the Bermuda Race four times in 1960, 1962, 1964 and 1966 winning 1st in Class and 15th in Overall in 1962. *Lady Linden* was destroyed by fire at Essex Boat Yard several years later.

MACKINAC/LAKE ERIE RACES

The Lake Erie Race in recent years has run from Buffalo Yacht Club westward for 230 miles to the North Cape Yacht Club in LaSalle, Michigan as a feeder to the Macs. Henry Williams raced to a 3rd in class in 1975 in *Margaret* and a 2nd in class in 1976 in *Susan B. Anthony*. Jim Robfogel's, *Ping* and Chester Clarridge's *Panache* also did the 1976 race against severe winds and wild thunderstorms.

RYC participation in the 285 mile Port Huron-Mackinac Race dates back to 1960 when both Frank Shumway and Alan Goldstein sailed to good finishes. In 1963, Jonathan C. Heinrich, Chuck Angle, Alan Goldstein, and Arthur Hughes raced the "Little Mac" with Heinrich's *Fairwind* placing best of the group.

During the past five years the RYC Burgee flew from at least one contender in the Macs each year. Henry Williams brought *Margaret* to Lake Huron in 1972 and 1975 and *Susan B. Anthony* in 1976 scoring 3rd in Class the first year. He also placed first in Class in the longer 1972 Chicago-Mackinac Race.

Crew aboard Henry Williams' boats in these races included Maureen Williams, Robb Holt, Chuck Strachan, Jon Ellison, Ted Broderson, Doug Taylor, Alex Forrester, Jim Williams, Bill Watson, Steve Haarstick, Chuck Lee, and Tim Booth.

John Odenbach sailed *Rampage* in the Port Huron Mackinac Race from 1973 through 1976 scoring 3rd and 2nd in Class in 1974 and 1975 respectively. Robfogel and Clarridge also raced the 1976 Port Huron Race.

These major national-level long distance races have become more and more attractive to RYC Cruising Class skippers and continuing participation can be expected.